



TORRES AI CI GOVERNMENT CUSTOMERS



- ✦ Argentina Special Operations Forces
- ✦ Argentina Prefectura Naval
- ✦ Argentina Gendarmeria Nacional
- ✦ Bureau of Diplomatic Security (DS)
- ✦ Bureau of International Narcotics and Law Enforcement Affairs (INL)
- ✦ Colombian Army
- ✦ Colombian National Police
- ✦ Defense Intelligence Agency (DIA)
- ✦ Drug Enforcement Administration (DEA)
- ✦ Federal Aviation Administration (FAA)
- ✦ Federal Bureau of Investigations (FBI)
- ✦ Federal Bureau of Prisons (BoP)
- ✦ Federal Police – Argentina
- ✦ Federal Police – Brazil
- ✦ National Geospatial Intelligence Agency (NGA)
- ✦ National Police – Paraguay
- ✦ National Police – Sierra Leone
- ✦ National Radio Astronomy Observatory (NRAO)
- ✦ National Aeronautics and Space Administration (NASA)
- ✦ NATO and European Ministries
- ✦ Presidents and Vice Presidents of the United States
- ✦ Prime Ministers and Presidents of Allied Nations
- ✦ Transportation and Safety Administration (TSA)



- ✦ United Nations - Africa and South America
- ✦ US Air Force Office of Special Investigations (OSI)
- ✦ US and Allied Consulates - Worldwide
- ✦ US and Allied Embassies - Worldwide
- ✦ US Congress – Senate and House of Representatives
- ✦ US Customs and Border Protection (CBP)
- ✦ US Department of Defense (DoD)
- ✦ US Department of the Interior (DoI)
- ✦ US Department of Justice (DoJ)
- ✦ US Department of State (DoS)
- ✦ US Department of the Air Force (USAF)
- ✦ US Department of the Army (USA)
- ✦ US Army Special Forces – The Green Berets
- ✦ US Department of the Navy (USN)
- ✦ US Navy SEALs (SEALs)
- ✦ US Marine Corps (USMC)
- ✦ US Department of the Treasury (USDT)
- ✦ US Fish and Wildlife Services (FWS)
- ✦ US Forward Operating Bases – Iraq, Afghanistan, El Salvador, Peru
- ✦ US Marine Corps (USMC)
- ✦ US Military and Civilian Intelligence Agencies
- ✦ US Office of Congressional Affairs
- ✦ US Special Operations Command (SOCOM)



TORRES AI CI

ARTIFICIAL INTELLIGENCE (AI)

CYBER INVESTIGATION

AND

CYBER INTELLIGENCE SOLUTIONS

LAW ENFORCEMENT, DEFENSE AND INTELLIGENCE OPERATIONS

COMBATING AND DEFEATING



CYBER INVESTIGATION AND INTELLIGENCE (CIU) SOLUTIONS



Capture the Digital Footprints of Transnational & Local Bad Actors for Law Enforcement:

- Criminal Cartels
- Organized Crime
- Organized Gangs
- National and Transnational Fugitives
- Money Launderers
- Build Cases Against Criminals and Bad Actors for Prosecution
- Capture Critical Intelligence Essential for National Security
 - Rebel or Insurgent elements intending to operate within National Borders
 - Transnational Bad Actors operating within and outside of National Borders
 - National Defense against Aggressive Nations and Forces
- Take Down False and Fake News from Web Sites and Social Media that is Disruptive to Civil Society
- Access the Dark Web where Criminals and Bad Actors Conduct Illegal Transactions:
 - Human Trafficking – Human Bones and Organs, Young Girls for Sex Trade, Migrants
 - Drug Trafficking
 - Weapons and Ammunition Trafficking
 - Stolen Identities
 - Murder and Kidnapping for Hire, etc.
 - Illegal Documentation – Passports, National IDs, Social Security Information, etc.





CYBER INVESTIGATION AND INTELLIGENCE (CIU) SOLUTIONS



- ✦ Build a Turn-Key Functional Cyber Investigative and Intelligence Unit (CIU) in 60 Days
- ✦ Implement the CIU based on the Needs of the Law Enforcement or Intelligence Unit
 - ✦ Number of Personnel to Train and Conduct Cyber Investigative and Intelligence Operations
 - ✦ Quantity and Configuration of Cyber Systems and Workstations
 - ✦ Size, Configuration and Location of the CIU Facilities
 - ✦ Types of Operations – Intelligence, Investigative, Offensive and/or Defensive Cyber Operations
- ✦ Train Customer Personnel to become Cyber Investigative and Intelligence Analysts (CI Analysts)
- ✦ Work Side-by-Side Customer CI Analysts until they Achieve Expertise and Success in Cases, Missions and Operations
- ✦ Provide Continuous Remote Support for Cases, Missions and Operations from Torres AI CI Facilities
- ✦ Develop CIU Processes, Procedures, Policies and Standards of Performance
- ✦ Develop Information and Data Classifications such as Confidential, Secret, Top Secret
- ✦ Develop Pay, Promotion, Advancement Structures for CI Managers, Supervisors and Analysts



THE CIU'S CELLULAR DEVICE EXPLOITATION CAPABILITY



- ✦ Nearly every Adolescent and Adult on the Plane possesses a Hand-Held Device such as:

- ✦ Apple iPhone. 27.10%
- ✦ Samsung. 26.75%
- ✦ Xiaomi. 12.29%
- ✦ Oppo. 6.86%
- ✦ Vivo. 5.30%
- ✦ Huawei. 4.84%



- ✦ Hand-Held Cellular Devices Contain as much or more usable information and data than tradition Laptop and Desktop Computers
- ✦ Much of the Data is difficult to access without Cellular Exploitation Devices and Software.
- ✦ The CIU should possess the Information and Data Exploitation of Hand-Held Devices Capability such as:
 - ✦ Emails and Text Messages
 - ✦ Photos and Videos
 - ✦ Imbedded IP Locations
 - ✦ Social Media Apps with Data and Information
 - ✦ Web Site Utilization



THE STUDENT CYBER MONITORING UNIT



- ✦ Implement a Student Cyber Monitoring Unit (CMU) for School Districts from Elementary through College and University to Passively Monitor Student Digital Footprint
- ✦ Monitor Students for Indications, Patterns or Digital Activities that they pose Threats or Harm to other Students or Faculty
- ✦ Identify Direct Threats to Other Students via Postings in Social Media, such as Pictures, Videos, Manifestos, Tweets, etc.
- ✦ Identify Students that have Committed or Intend to Commit Crimes based on Social Media Postings or Web Browsing Activities
- ✦ Monitor Student Social Media Posts for Indications of Tendencies towards Violence against Other Students, Faculty, or any other Persons
- ✦ Monitor Student Web Browsing and Searches for Indications of Illegal Behavior such as Child Pornography, Drug Trafficking or Drug Use, Illegal Possession of Firearms, etc.
- ✦ Conduct Student Background Checks with Law Enforcement Databases to determine Past Behavior that may Pose a Risk to other Students, Faculty, Family and all other Persons
- ✦ Perform Risk Analysis to Determine whether a Student or Groups of Students should be Flagged for Social or Law Enforcement Intervention – Prevent the Crime before it Happens



TORRES AI CI SUCCESSES - EXAMPLES

SUCCESSFULLY PROSECUTED CASES AND EXPLOITED INTELLIGENCE

- ✦ Transnational Human Trafficking – Africa, Central America, South America
- ✦ Transnational Drug and Precursor Smuggling – The Americas, Europe, Africa and Asia
- ✦ Illegal Drug Production and Distribution Operations – The Americas
- ✦ Political and Bureaucratic Corruption – The Americas
- ✦ Transnational Arms Dealing and Trafficking – The Americas
- ✦ Transnational Money Laundering – The Americas, Africa
- ✦ Terrorist Kidnapping – South America
- ✦ Murder for Hire – South America
- ✦ Extortion – South America, Africa
- ✦ Racketeering – The Americas
- ✦ Contraband Trafficking - Whiskey, Cigarettes, Forgeries, etc. – The Americas
- ✦ Insurgency and Rebel Operational Plans and Logistical Resources
- ✦ Fake and False News Web and Media Postings
- ✦ More...





THE CYBER INVESTIGATIVE AND INTELLIGENCE UNIT



FLEXIBLE CYBER SOLUTION OPTIONS

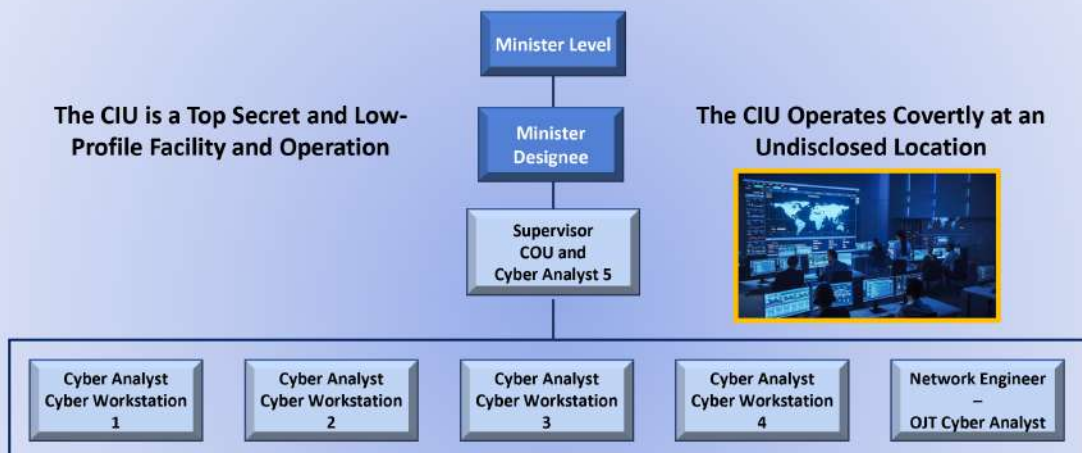
- ✦ Implement a Single or Multiple Turn-Key CIUs at Customer-designated Sites
- ✦ Focus Training and Operations on Investigative Law Enforcement Only
- ✦ Focus Training and Operations on National Intelligence Collection Only
- ✦ Focus Training and Operations on Attacking False and Fake News in Social Media and Web Sites Only (Offensive Operations)
- ✦ Implement CIUs for Customers and Conduct CIU Operations for Customers from Remote Torres AI CI Locations
- ✦ Solely Conduct CIU Investigative and/or Intelligence Operations for Customers from Remote Torres AI CI Locations
- ✦ Solely Conduct Offensive Operations – Attack False and Fake News in Social Media and Web Sites for Customers from Remote Torres AI CI Locations
- ✦ Utilized Torres AI CI CIU Assets as Staff Augmentation
- ✦ Pricing is Based on the Specific Customer Services Delivered



THE BASIC CIU ORGANIZATIONAL STRUCTURE

The CIU is a Top Secret and Low-Profile Facility and Operation

The CIU Operates Covertly at an Undisclosed Location



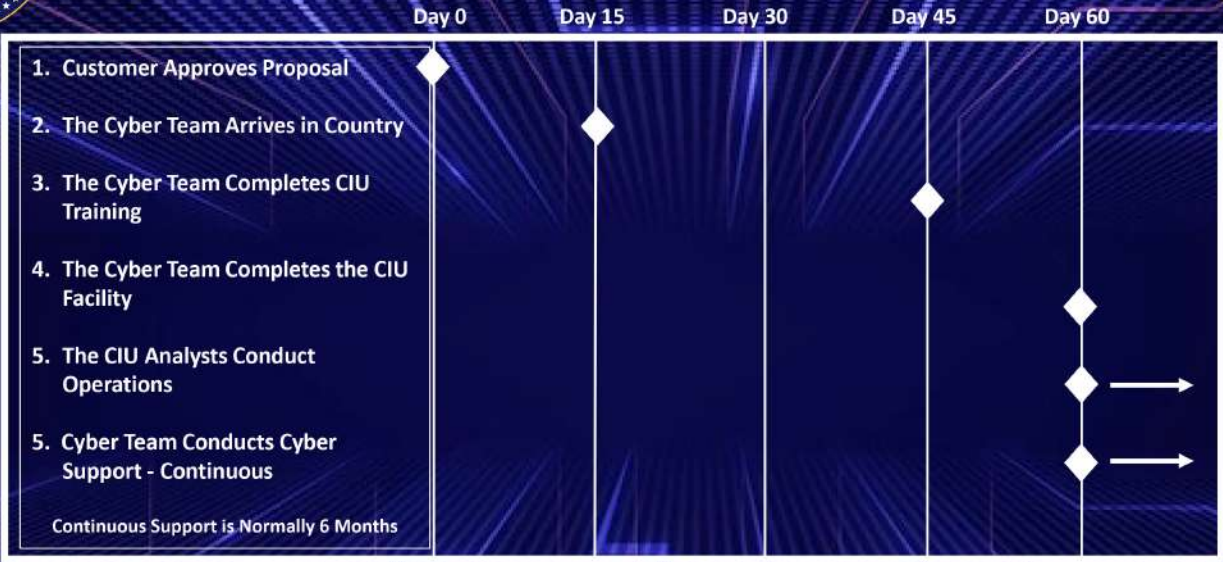
1. The CIU is Focused on Cyber Offensive, Defensive Operations and Investigative and Intelligence and Evidence Collection.
2. The CIU Supervisor is also a Senior Cyber Analyst and Performs all Cyber-Related Duties.
3. The Network Engineer will receive On-the-Job-Training (OJT) to become an Additional Cyber Analyst.
4. The CIU May be 8-Hour to 12-Hour Operations with all Four (4) Analysts working One Shift.
5. The CIU May be 16 Hour to 24-Hour Operations with Two (2) Analysts working Two Shifts.

TORRES ALCI CUSTOMIZES THIS UNIT STRUCTURE BASED ON THE MISSION



THE TIMELINE FOR DELIVERY

THE CYBER INVESTIGATION UNIT



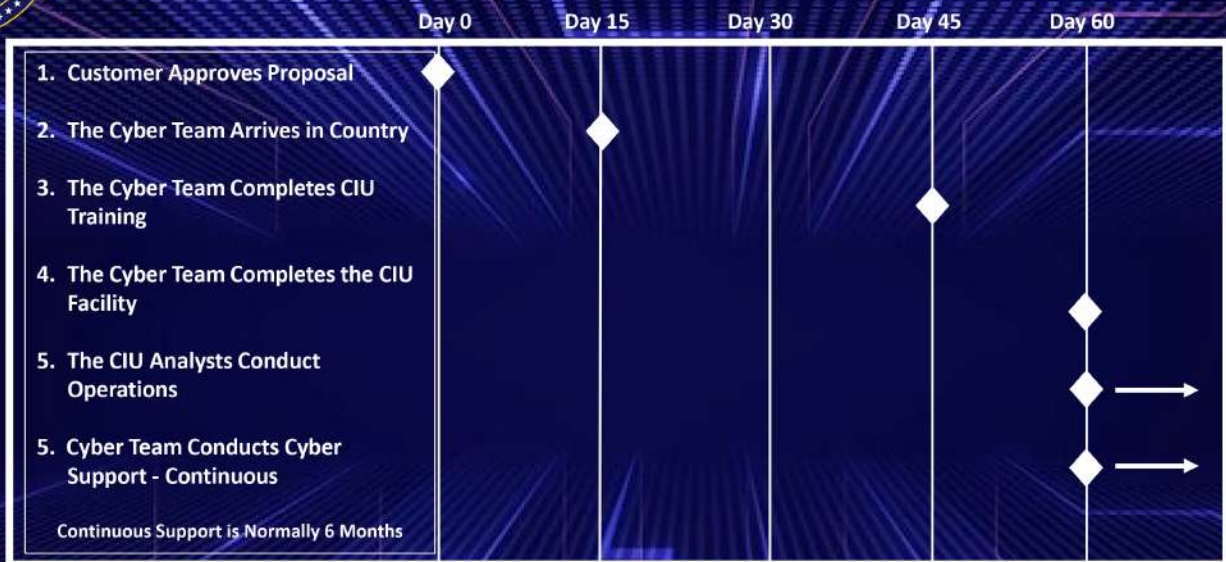
TORRES AI CI DELIVERS EFFECTIVE SOLUTIONS ON TIME WITH CONFIDENCE





THE TIMELINE FOR DELIVERY

THE CYBER INVESTIGATION UNIT



TORRES AI CI DELIVERS EFFECTIVE SOLUTIONS ON TIME WITH CONFIDENCE

